

Döşemealtı Kablo Kanalları

Underfloor Cable Trays

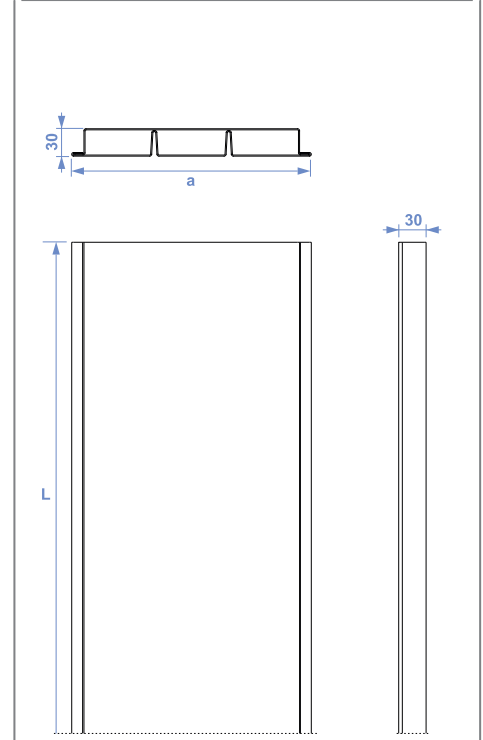
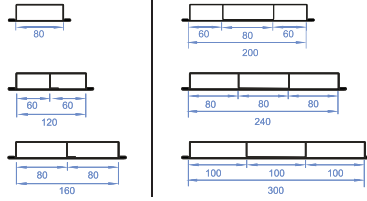


Döşemealtı Kablo Kanalları / Underfloor Cable Trays



h30

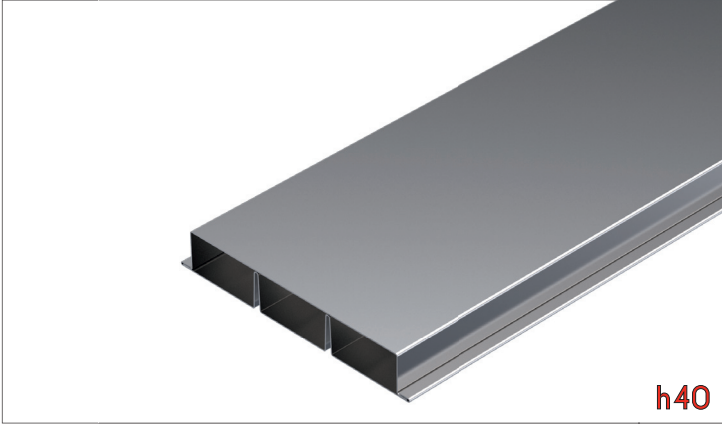
Ürün Kodu Product Code	a mm	L mm	1,2 mm kg m
STS D08-312	80	2500	2,525
STS D12-312	120	2500	3,702
STS D16-312	160	2500	4,427
STS D20-312	200	2500	5,614
STS D24-312	240	2500	6,368
STS D30-312	300	2500	7,498



Sac Kalınlığı (t) [mm]:
Thickn. (t) [mm]:

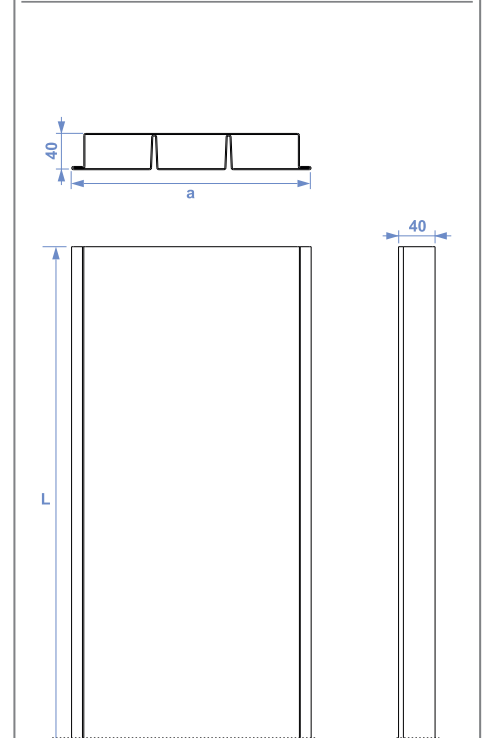
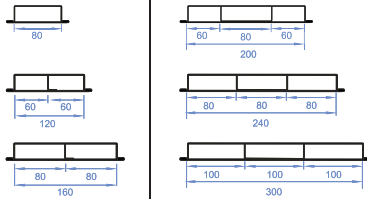


Döşemealtı Kablo Kanalları / Underfloor Cable Trays



h40

Ürün Kodu Product Code	a mm	L mm	1,2 mm kg m
STS D08-412	80	2500	2,713
STS D12-412	120	2500	3,890
STS D16-412	160	2500	4,616
STS D20-412	200	2500	5,803
STS D24-412	240	2500	6,556
STS D30-412	300	2500	7,687



Sac Kalınlığı (t) [mm]:
Thickn. (t) [mm]:



• Ölçüler mm.dir - Dimensions in mm.

• Ağırlıklar ± 5% farklılık gösterebilir - Material weights may vary by ± 5%