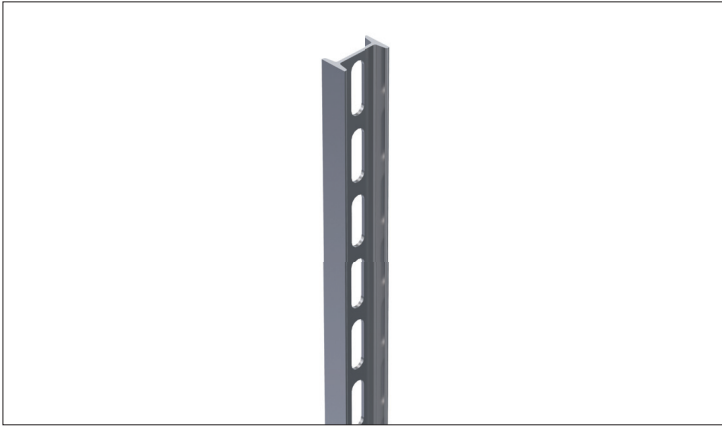
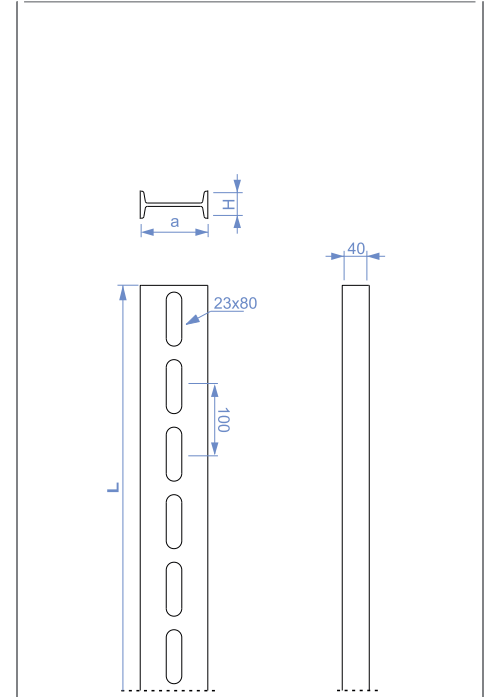


NPI Profil / NPI Profile



| Ürün Kodu Product Code | a mm | L mm | 5,0 mm kg/ad kg/pcs |
|---------------------------|---------|---------|---------------------------|
| STS I 80-20 | 80 | 200 | 1,126 |
| STS I 80-30 | 80 | 300 | 1,689 |
| STS I 80-40 | 80 | 400 | 2,252 |
| STS I 80-50 | 80 | 500 | 2,815 |
| STS I 80-60 | 80 | 600 | 3,378 |
| STS I 80-70 | 80 | 700 | 3,941 |
| STS I 80-80 | 80 | 800 | 4,504 |
| STS I 80-90 | 80 | 900 | 5,067 |
| STS I 80-100 | 80 | 1000 | 5,630 |
| STS I 80-110 | 80 | 1100 | 6,193 |

| Ürün Kodu Product Code | a mm | L mm | 5,0 mm kg/ad kg/pcs |
|---------------------------|---------|---------|---------------------------|
| STS I 80-120 | 80 | 1200 | 6,756 |
| STS I 80-130 | 80 | 1300 | 7,319 |
| STS I 80-140 | 80 | 1400 | 7,882 |
| STS I 80-150 | 80 | 1500 | 8,445 |
| STS I 80-160 | 80 | 1600 | 9,008 |
| STS I 80-170 | 80 | 1700 | 9,571 |
| STS I 80-180 | 80 | 1800 | 10,134 |
| STS I 80-190 | 80 | 1900 | 10,697 |
| STS I 80-200 | 80 | 2000 | 11,260 |
| STS I 80-300 | 80 | 3000 | 16,890 |



Sac Kalınlığı (t) [mm]:
Thickn. (t) [mm]:

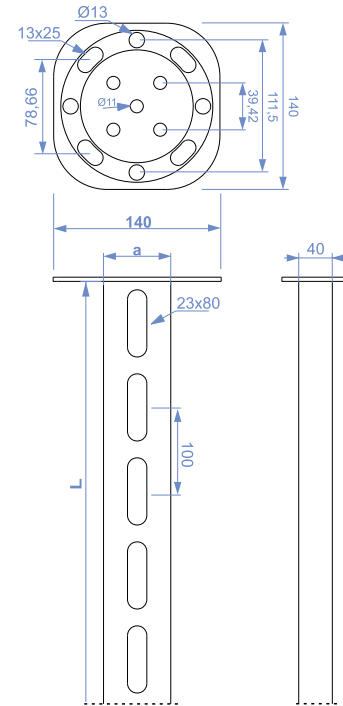


NPI Profil Tavan Montaj Elemanı / NPI Profile Ceiling Assembly Element



| Ürün Kodu Product Code | a mm | L mm | 5,0 mm kg/ad kg/pcs |
|---------------------------|---------|---------|---------------------------|
| STS IT 80-20 | 80 | 200 | 1,756 |
| STS IT 80-30 | 80 | 300 | 2,314 |
| STS IT 80-40 | 80 | 400 | 2,882 |
| STS IT 80-50 | 80 | 500 | 2,938 |
| STS IT 80-60 | 80 | 600 | 3,501 |
| STS IT 80-70 | 80 | 700 | 4,064 |
| STS IT 80-80 | 80 | 800 | 4,627 |
| STS IT 80-90 | 80 | 900 | 5,190 |
| STS IT 80-100 | 80 | 1000 | 5,753 |
| STS IT 80-110 | 80 | 1100 | 6,316 |

| Ürün Kodu Product Code | a mm | L mm | 5,0 mm kg/ad kg/pcs |
|---------------------------|---------|---------|---------------------------|
| STS IT 80-120 | 80 | 1200 | 6,879 |
| STS IT 80-130 | 80 | 1300 | 7,442 |
| STS IT 80-140 | 80 | 1400 | 8,005 |
| STS IT 80-150 | 80 | 1500 | 8,568 |
| STS IT 80-160 | 80 | 1600 | 9,131 |
| STS IT 80-170 | 80 | 1700 | 9,694 |
| STS IT 80-180 | 80 | 1800 | 10,257 |
| STS IT 80-190 | 80 | 1900 | 10,820 |
| STS IT 80-200 | 80 | 2000 | 11,382 |
| STS IT 80-300 | 80 | 3000 | 17,073 |



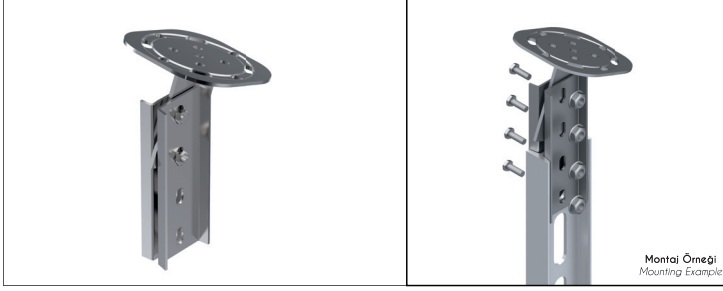
Sac Kalınlığı (t) [mm]:
Thickn. (t) [mm]:



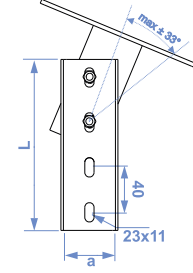
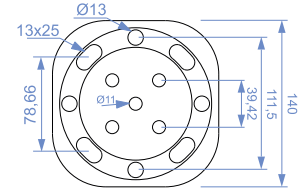
• Ölçüler mm.dir - Dimensions in mm.

- L: 6000 mm olarak imal edilebilir.
- Ağırlıklar ± 5% farklılık gösterebilir - Material weights may vary by ± 5%

NPI Profil Ayarlanabilir Tavan Montaj Elemanı / NPI Profile Adjustable Ceiling Assembly Element



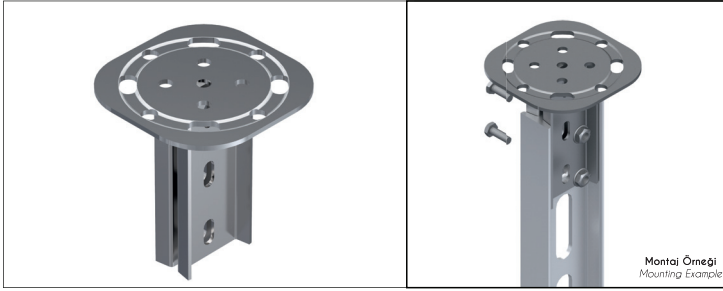
| Ürün Kodu Product Code | a mm | L mm | 3,0 mm kg/ad kg/pcs |
|---------------------------|---------|---------|---------------------------|
| STS I AP | 64 | 210 | 1,540 |



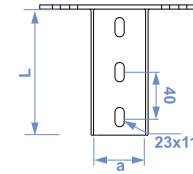
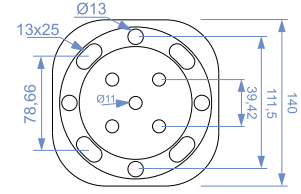
Sac Kalınlığı (t) [mm]:
Thickn. (t) [mm]:



NPI Profil Sabit Tavan Montaj Elemanı / NPI Profile Fixing Ceiling Assembly Element



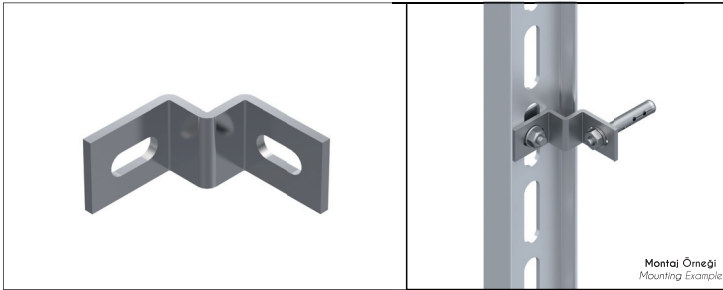
| Ürün Kodu Product Code | a mm | L mm | 3,0 mm kg/ad kg/pcs |
|---------------------------|---------|---------|---------------------------|
| STS I SP | 64 | 150 | 1,340 |



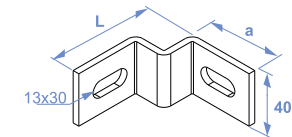
Sac Kalınlığı (t) [mm]:
Thickn. (t) [mm]:



Duvar Montaj Elemanı / Wall Assembly Element



| Ürün Kodu Product Code | a mm | L mm | 5,0 mm kg/ad kg/pcs |
|---------------------------|---------|---------|---------------------------|
| STS I DP1 | 55 | 80 | 0,216 |



Sac Kalınlığı (t) [mm]:
Thickn. (t) [mm]:



• Ağırlıklar ± 5% farklılık gösterebilir - Material weights may vary by ± 5%

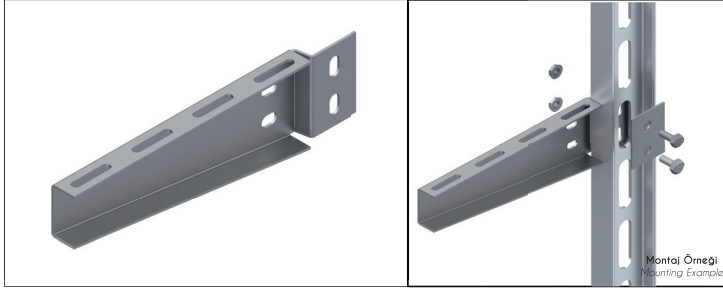
• Ölçüler mm.dir - Dimensions in mm.

Askı & Destek Sistemleri / Hanging & Support Systems

NPI Profiller / NPI Profiles

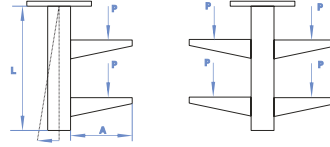
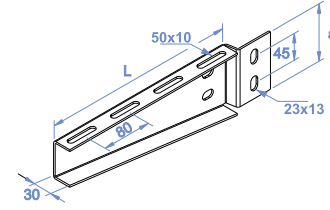


NPI Profil Konsolları / NPI Profile Brackets



| Ürün Kodu Product Code | a mm | L mm | 2,0 mm kg/ad kg/pcs |
|---------------------------|---------|---------|---------------------------|
| STS I K 10 | 100 | 110 | 0,579 |
| STS I K 15 | 100 | 160 | 0,674 |
| STS I K 20 | 100 | 210 | 0,815 |
| STS I K 25 | 100 | 260 | 0,956 |
| STS I K 30 | 100 | 310 | 1,050 |

| Ürün Kodu Product Code | a mm | L mm | 3,0 mm kg/ad kg/pcs |
|---------------------------|---------|---------|---------------------------|
| STS I K 40 | 100 | 410 | 1,577 |
| STS I K 50 | 100 | 510 | 1,872 |
| STS I K 60 | 100 | 610 | 2,166 |



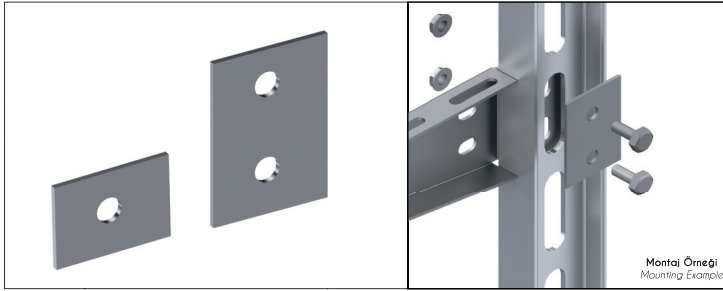
I PROFİL STATİK DEĞERLERİ I SUPPORT STATIC VALUES

| TEK TARAFI YÜKLEME UNILATERAL LOADING | | | | | | | | | |
|---|-----|-----|-----|-----|-----|-----|-----|-----|-----|
| KONSOL UZUNLUĞU (A) LENGTH OF BRACKET (A) | 200 | 200 | 200 | 400 | 400 | 400 | 600 | 600 | 600 |
| P (kg) | 120 | 240 | 360 | 65 | 130 | 200 | 46 | 90 | 140 |
| F(mm) L=500mm | 3 | 4 | 2 | 5 | 2 | 5 | | | |
| F(mm) L=1000mm | 5 | 10 | 17 | 4 | 11 | 19 | 5 | 12 | 19 |
| F(mm) L=1000mm | 9 | 15 | 22 | 9 | 16 | 24 | 9 | 17 | 25 |
| ÇİFT TARAFI YÜKLEME DOUBLE SIDES LOADING (I-II) | | | | | | | | | |
| KONSOL UZUNLUĞU (A) LENGTH OF BRACKET (A) | 200 | 200 | 200 | 400 | 400 | 400 | 600 | 600 | 600 |
| P (kg) | 240 | 380 | 480 | 130 | 195 | 256 | 92 | 136 | 186 |

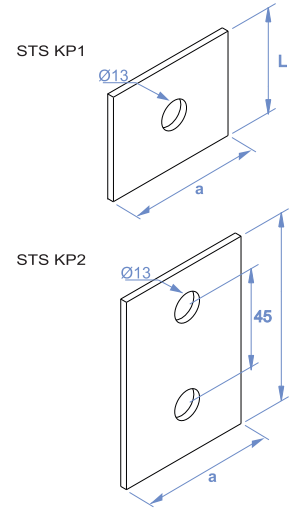
Sac Kalınlığı (t) [mm]:
Thickn. (t) [mm]:



NPI Profil Kare Pul / NPI Profile Square Washer



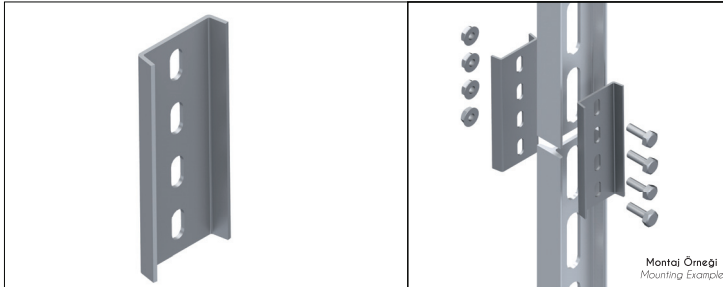
| Ürün Kodu Product Code | a mm | L mm | 3,0 mm kg/ad kg/pcs |
|---------------------------|---------|---------|---------------------------|
| STS KP | 64 | 85 | 0,114 |



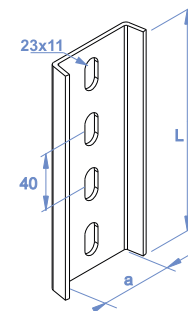
Sac Kalınlığı (t) [mm]:
Thickn. (t) [mm]:



NPI Profil Dikey Ek Elemanı / NPI Profile Vertical Straight Connector



| Ürün Kodu Product Code | a mm | L mm | 4,0 mm kg/ad kg/pcs |
|---------------------------|---------|---------|---------------------------|
| STS I 80-EK1 | 64 | 165 | 0,782 |



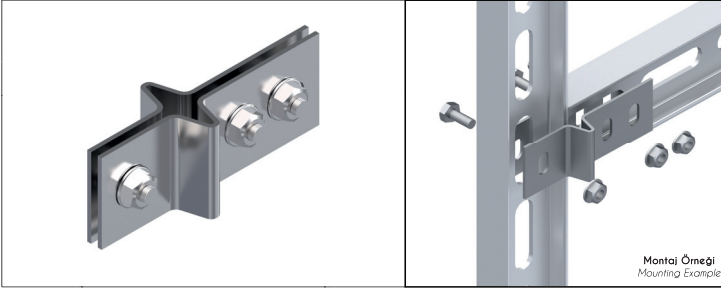
Sac Kalınlığı (t) [mm]:
Thickn. (t) [mm]:



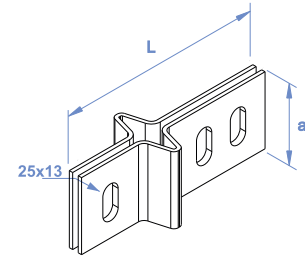
• Ağırlıklar ± 5% farklılık gösterebilir - Material weights may vary by ± 5%

• Ölçüler mm.dir - Dimensions in mm.

NPI-Profil Yatay Ek Elemanı / NPI Profile Horizontal Straight Connector



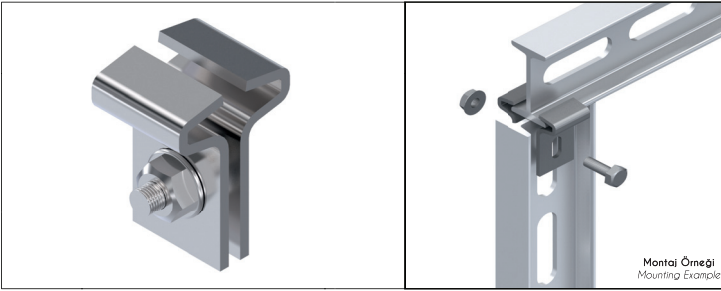
| Ürün Kodu Product Code | a mm | L mm | 3,0 mm kg/ad kg/pcs |
|---------------------------|---------|---------|---------------------------|
| STS I 80-EK2 | 64 | 165 | 0,505 |



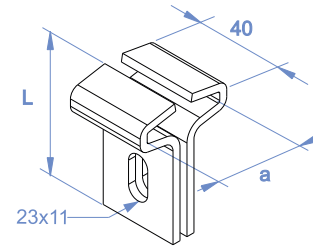
Sac Kalınlığı (t) [mm]:
Thickn. (t) [mm]:



NPI-Profil Bağlantı Elemanları / Connection Element for NPI Profile



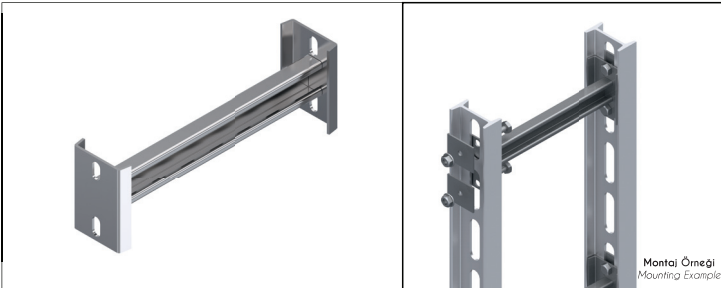
| Ürün Kodu Product Code | a mm | L mm | 4,0 mm kg/ad kg/pcs |
|---------------------------|---------|---------|---------------------------|
| STS I SA-1 | 39 | 80 | 0,477 |
| STS I SA-2 | 47 | 80 | 0,500 |
| STS I SA-3 | 55 | 80 | 0,527 |
| STS I SA-4 | 63 | 80 | 0,552 |



Sac Kalınlığı (t) [mm]:
Thickn. (t) [mm]:

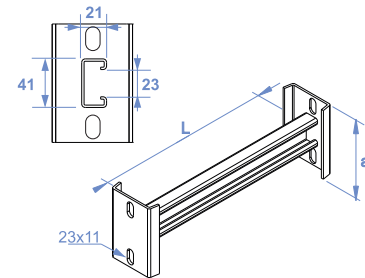


NPI-Profil Merdiven Ara Bağlantı Elemanı / Ladder Connection Element



| Ürün Kodu Product Code | a mm | L mm | 2,0 mm kg/ad kg/pcs |
|---------------------------|---------|---------|---------------------------|
| STS I 80-30 C | 120 | 300 | 1,000 |
| STS I 80-40 C | 120 | 400 | 1,153 |
| STS I 80-50 C | 120 | 500 | 1,310 |
| STS I SA-60 C | 120 | 600 | 1,467 |

| Ürün Kodu Product Code | a mm | L mm | 2,0 mm kg/ad kg/pcs |
|---------------------------|---------|---------|---------------------------|
| STS I 80-70 C | 120 | 700 | 1,624 |
| STS I 80-80 C | 120 | 800 | 1,781 |
| STS I 80-90 C | 120 | 900 | 1,938 |
| STS I 80-100 C | 120 | 1000 | 2,095 |
| STS I 80-120 C | 120 | 1200 | 2,409 |



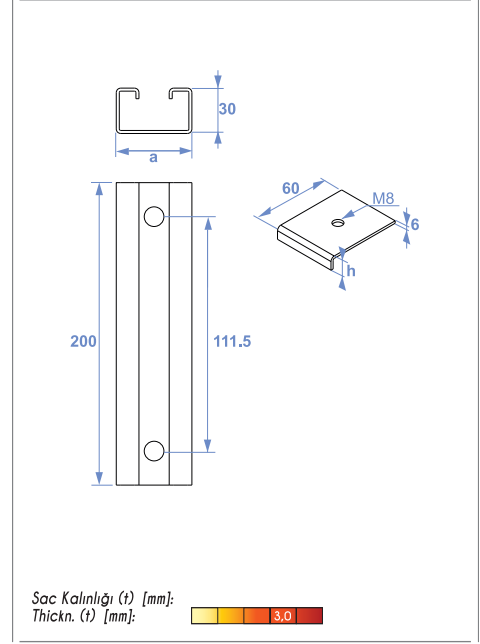
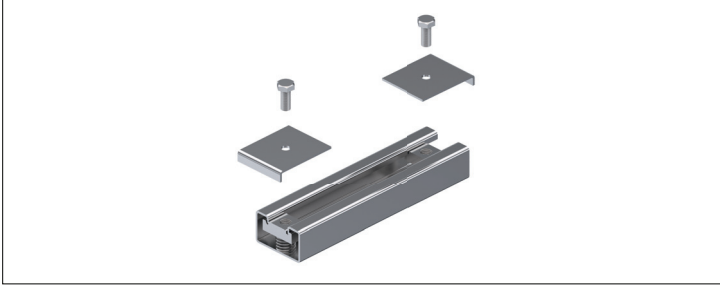
Sac Kalınlığı (t) [mm]:
Thickn. (t) [mm]:



• Ağırlıklar ± 5% farklılık gösterebilir - Material weights may vary by ± 5%

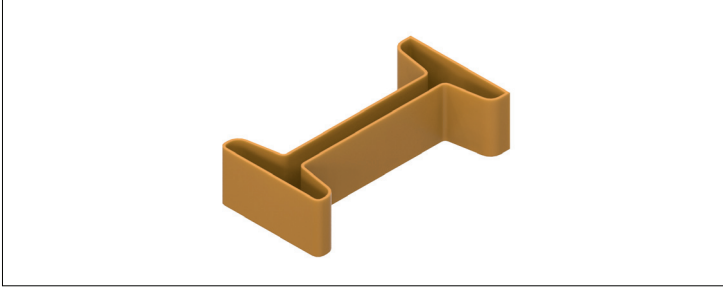
• Ölçüler mm.dir - Dimensions in mm.

NPI-Profil Tespit Kelepçesi / NPI Profile Fixing Clamp

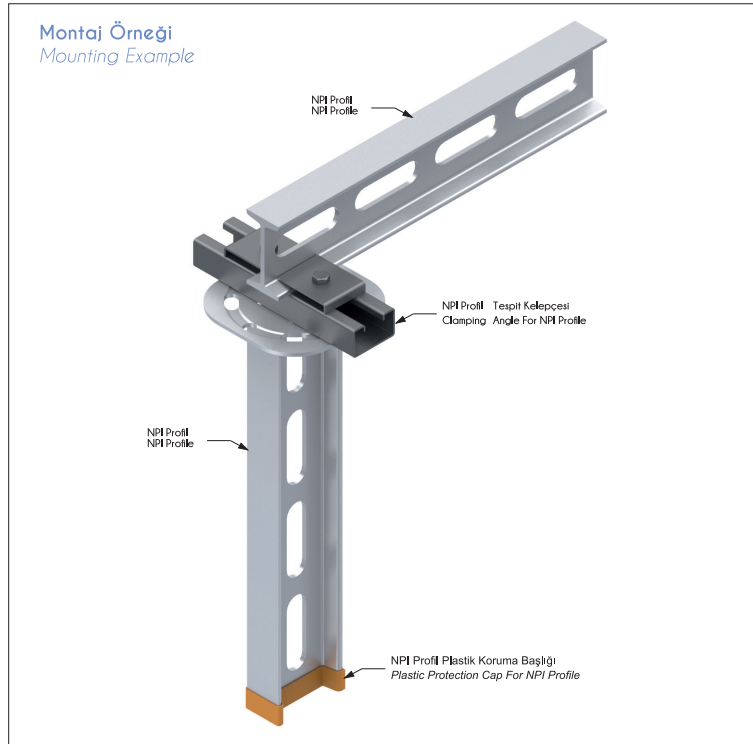


| Ürün Kodu Product Code | a mm | h mm | 2,0 mm kg/ad kg/pcs |
|---------------------------|---------|---------|---------------------------|
| STS CA 5 | 50 | 5 | 0,690 |
| STS CA 10 | 50 | 10 | 0,710 |
| STS CA 15 | 50 | 15 | 0,730 |
| STS CA 20 | 50 | 20 | 0,750 |

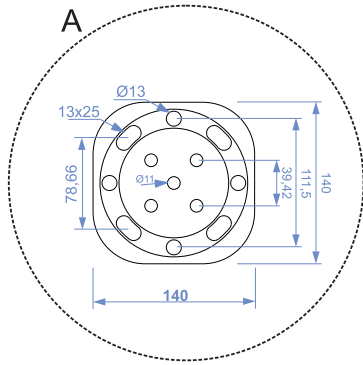
NPI Plastik Koruma Başlığı / Plastic Protection Cap



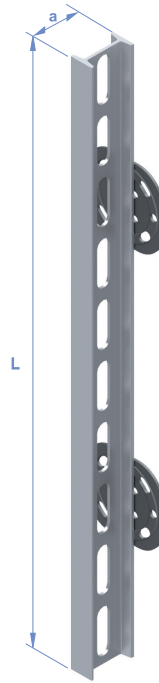
| Ürün Kodu Product Code | kg/ad kg/pcs |
|---------------------------|-----------------|
| STS IKB | 0,032 |



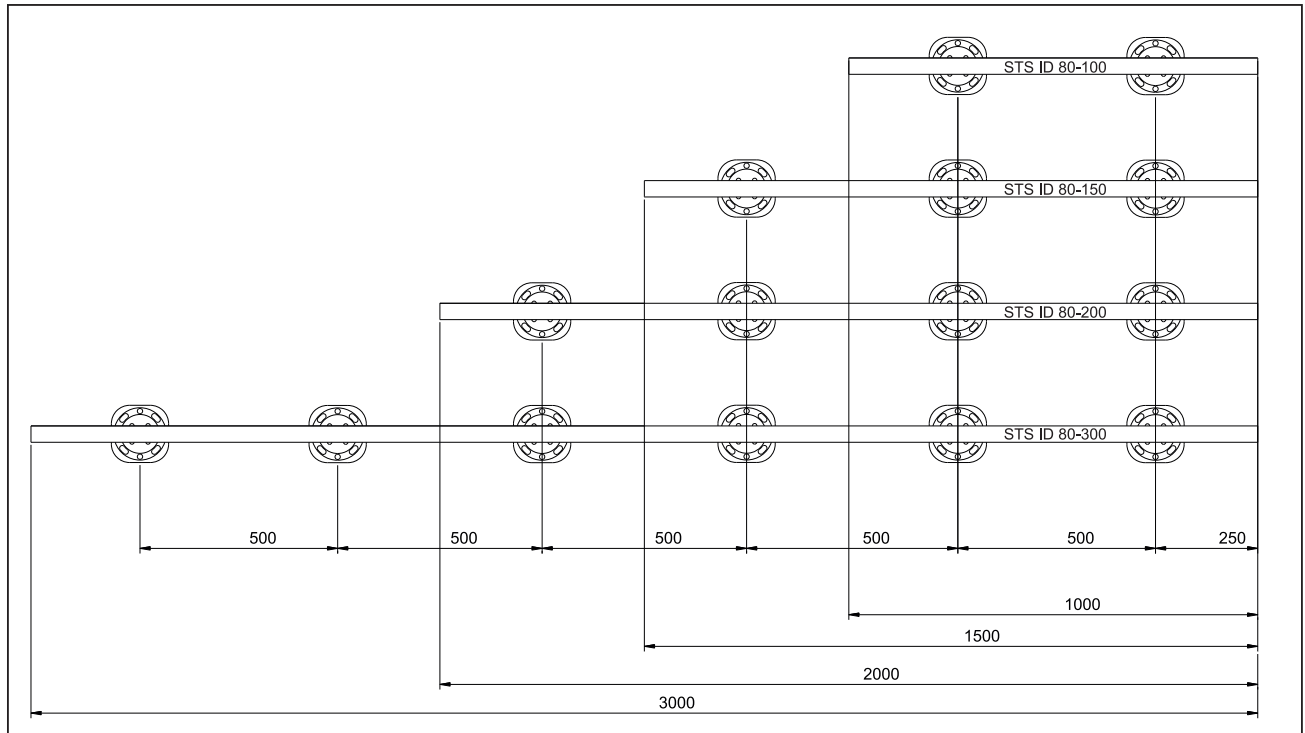
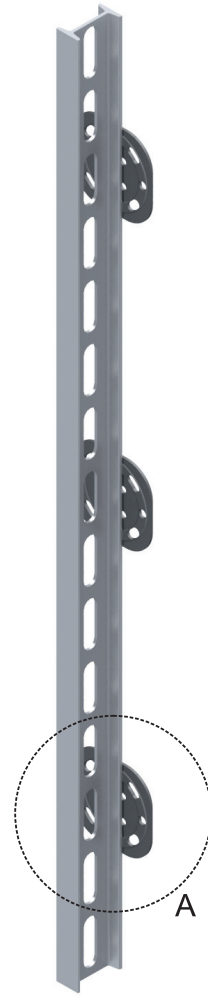
| Ürün Kodu Product Code | a mm | L mm | 5,0 mm kg/ad kg/pcs |
|---------------------------|---------|---------|---------------------------|
| STS ID 80-100 | 80 | 1000 | 6,890 |
| STS ID 80-150 | 80 | 1500 | 10,335 |
| STS ID 80-200 | 80 | 2000 | 13,780 |
| STS ID 80-300 | 80 | 3000 | 20,670 |



STS ID 80-100



STS ID 80-150



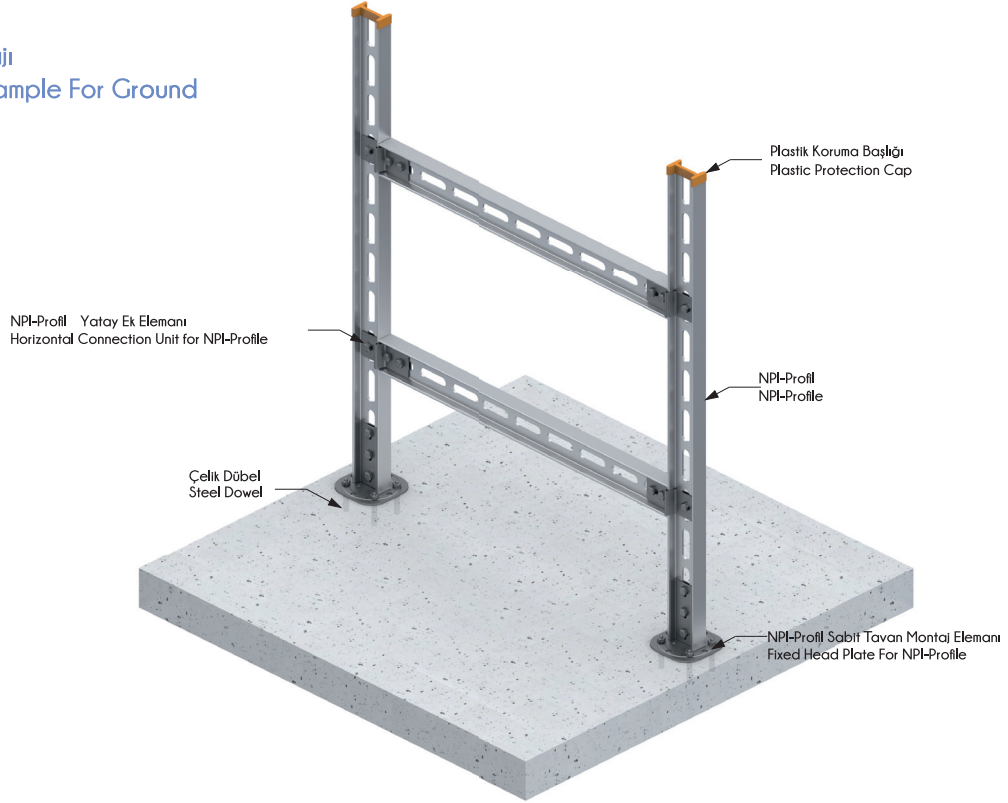
• Ağırlıklar ± 5% farklılık gösterebilir - Material weights may vary by ± 5%

Sac Kalınlığı (t) [mm]:
Thickn. (t) [mm]:

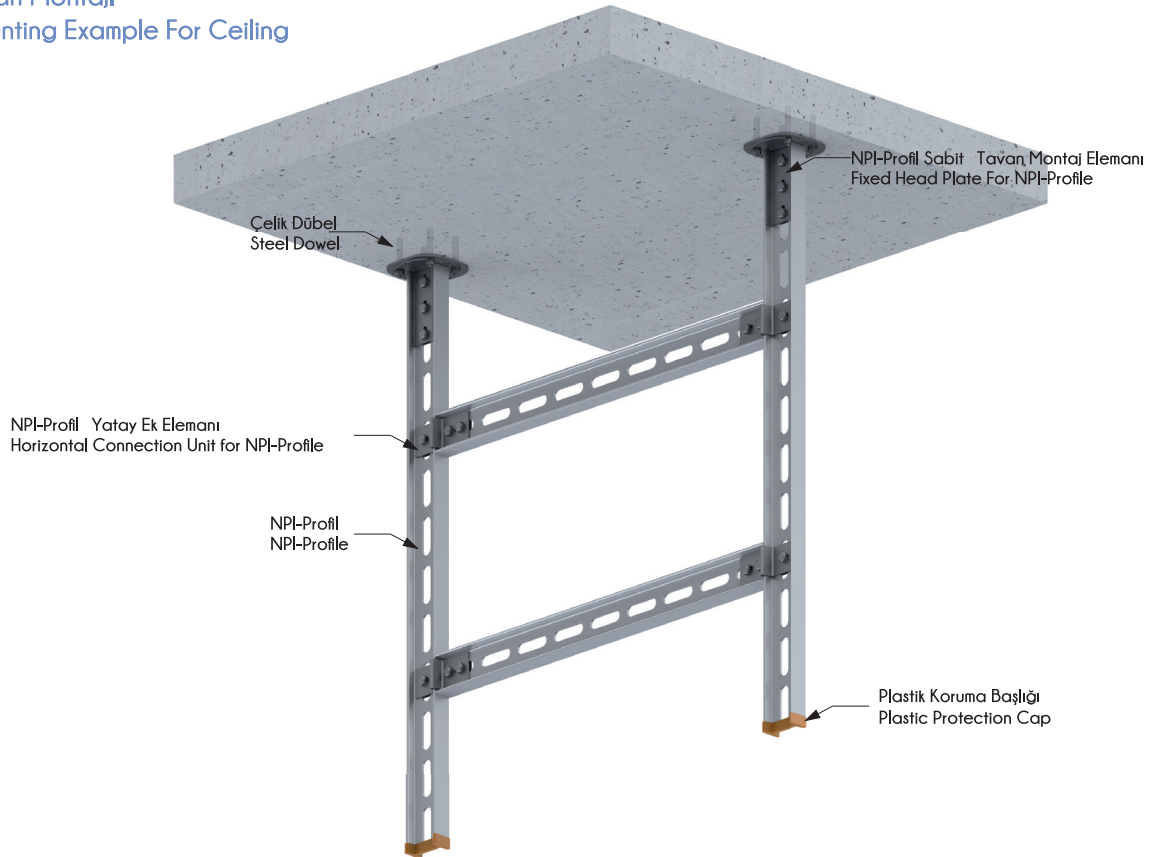


Montaj Örnekleri Mounting Examples

Zemin Montajı Mounting Example For Ground

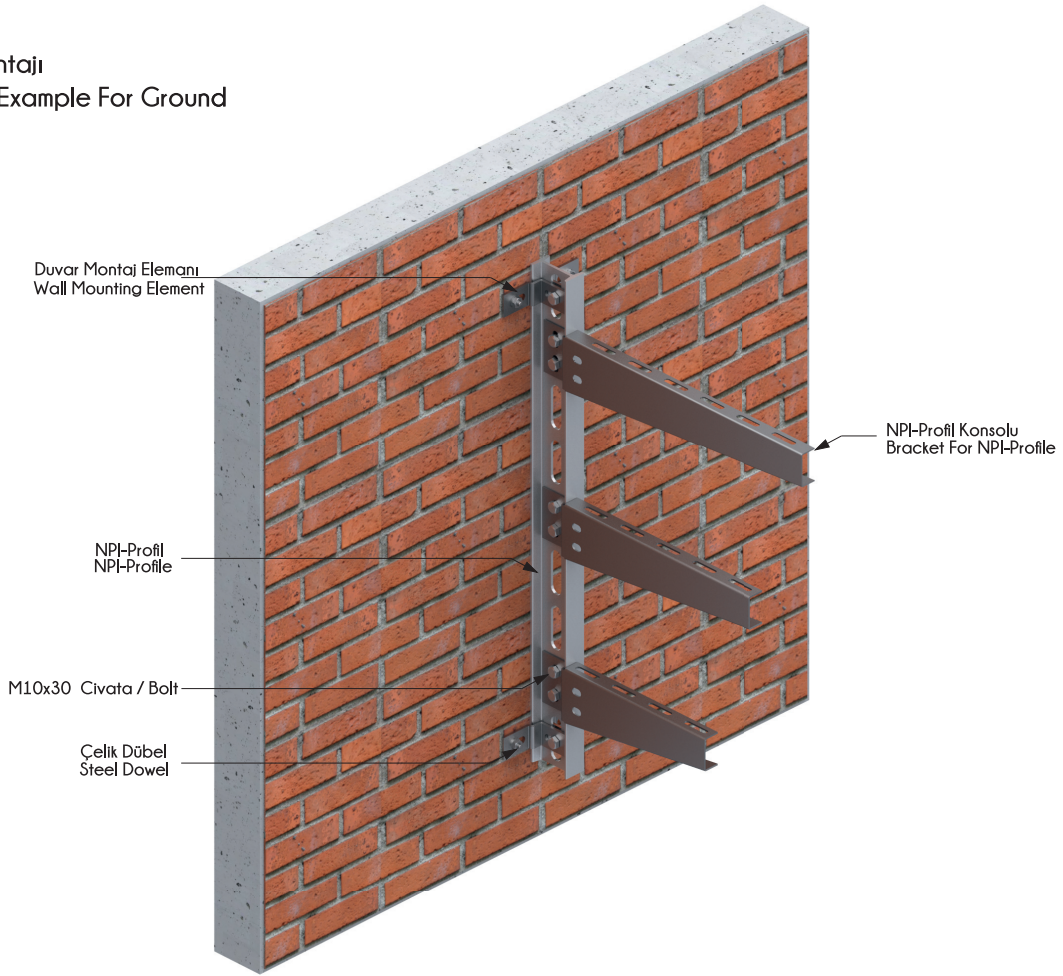


Tavan Montajı Mounting Example For Ceiling



Montaj Örnekleri
Mounting Examples

Duvar Montajı
Mounting Example For Ground



Tavan Montajı
Mounting Example For Ceiling

