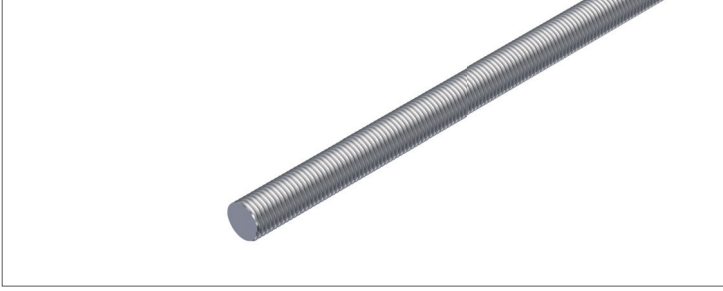
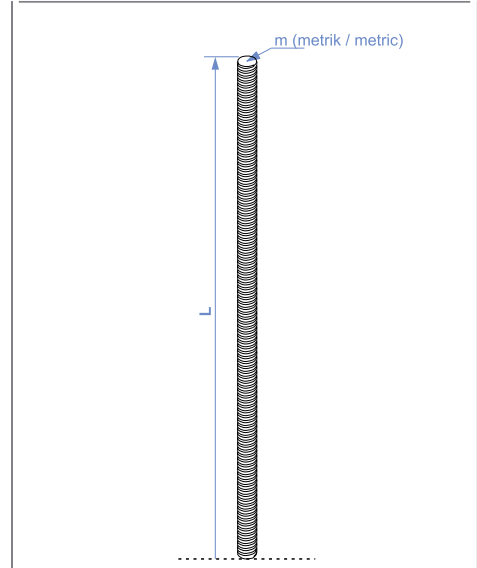


Askı Tijleri / Hanging Rods



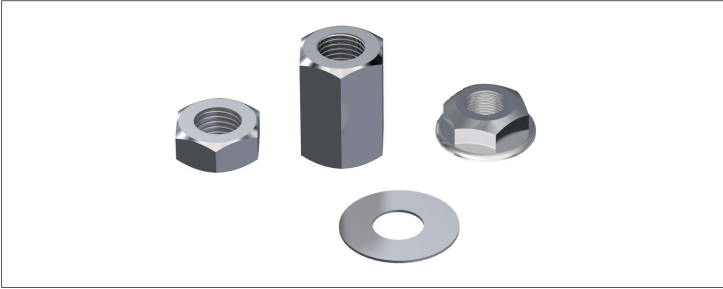
Ürün Kodu Product Code	m	L mm	m / Ø kg/pcs kg/ad
STS R8X 100	8	1000	0,300
STS R8X 200	8	2000	0,600
STS R8X 300	8	3000	0,900

Ürün Kodu Product Code	m	L mm	m / Ø kg/pcs kg/ad
STS R10X 100	10	1000	0,460
STS R10X 200	10	2000	0,920
STS R10X 300	10	3000	1,380
STS R12X 100	12	1000	0,675
STS R12X 200	12	2000	1,350



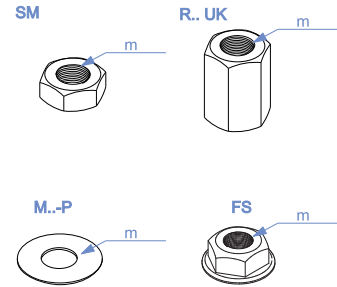
Çap (Ø) [mm]:
Diameter (Ø) [mm]: **8 10 12**

Uzatma Kovanı, Somun, Civata, Pul / Extension Sleeve, Nut, Bolt, Washer



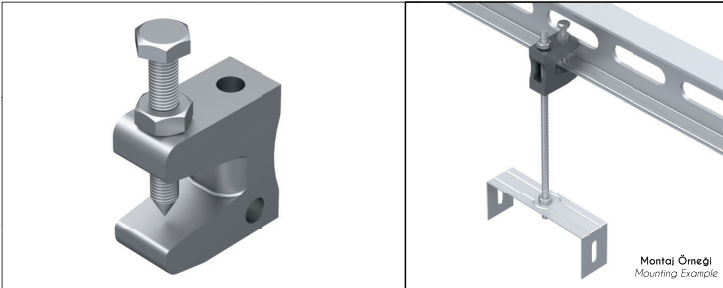
Ürün Kodu Product Code	m	m / Ø kg/pcs kg/ad
STS R8 UK	8	0,018
STS R10 UK	10	0,030
STS R12 UK	12	0,040
STS SM 8	8	0,005
STS SM 10	10	0,010

Ürün Kodu Product Code	m	m / Ø kg/pcs kg/ad
STS SM 12	12	0,016
STS M8-P	8	0,001
STS M10-P	10	0,003
STS M12-P	12	0,005
STS C10X25	10	0,030

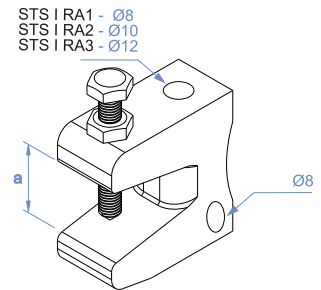


Çap (Ø) [mm]:
Diameter (Ø) [mm]: **8 10 12**

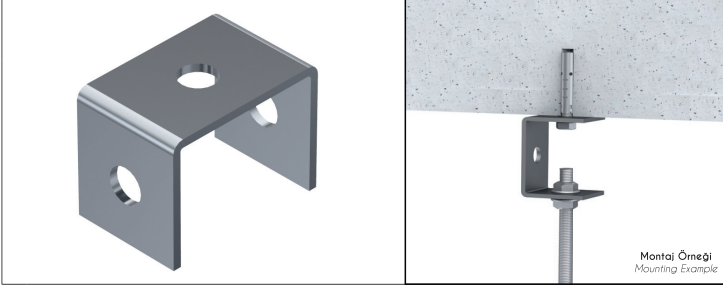
Tij Askı Mengenesi / Hanger Rod Clamp



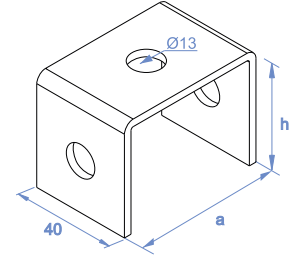
Ürün Kodu Product Code	a mm	Ø mm	kg/pcs kg/ad
STS I RA 1	23	M8	0,092
STS I RA 2	23	M10	0,158
STS I RA 3	42	M12	0,260



Tij Tavan Montaj Elemanı / Rod Ceiling Assembly Element



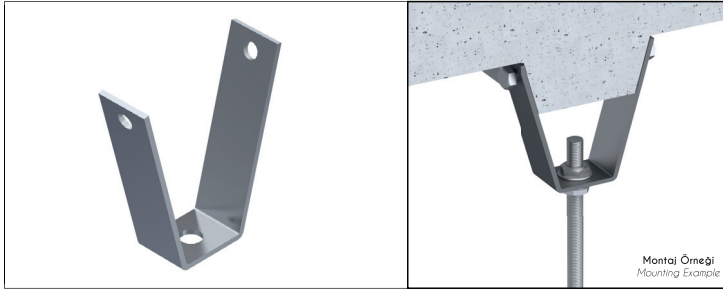
Ürün Kodu Product Code	a mm	h mm	3,00 mm kg/pcs kg/ad
STS RTA	60	40	0,137



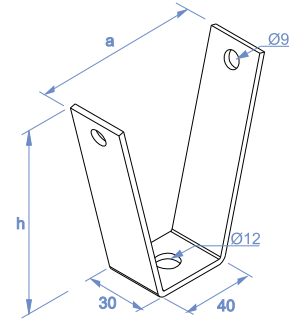
Sac Kalınlığı (t) [mm]:
Thickn. (t) [mm]:



Tij Tavan Montaj Elemanı / Rod Ceiling Assembly Element



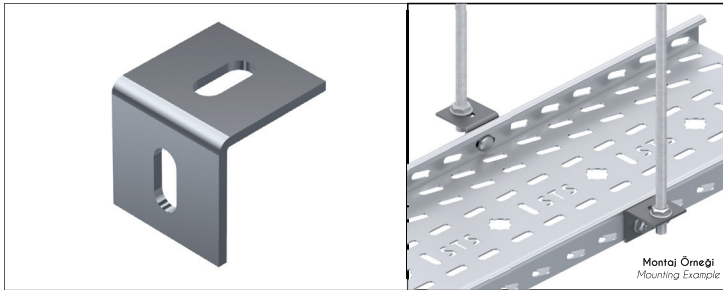
Ürün Kodu Product Code	a mm	h mm	3,00 mm kg/pcs kg/ad
STS STA	90	100	0,176



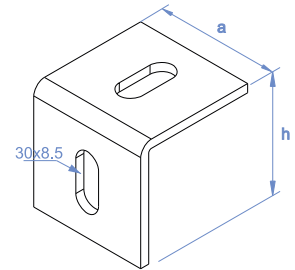
Sac Kalınlığı (t) [mm]:
Thickn. (t) [mm]:



L Tipi Kanal Askı Taşıyıcı / L Type Tray Hanger Carrier



Ürün Kodu Product Code	a mm	L mm	3,00 mm kg/pcs kg/ad
STS LK1	40	40	0,075



Sac Kalınlığı (t) [mm]:
Thickn. (t) [mm]:



• Ağırlıklar ± 5% farklılık gösterebilir - Material weights may vary by ± 5%

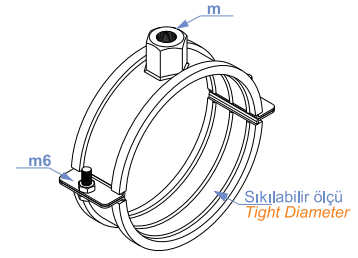
• Ölçüler mm.dir - Dimensions in mm.

Lastikli Boru Kelepçesi / Rubber Pipe Clamp



Ürün Kodu Product Code	m	Çap Inch	kg/pcs kg/ad
STS BK 20	8	1/2"	0,050
STS BK 25	8	3/4"	0,060
STS BK 30	8	1"	0,070
STS BK 40	8	1,1/4"	0,080
STS BK 50	8	1,1/2"	0,090
STS BK 60	8	2"	0,110

Ürün Kodu Product Code	m	Çap Inch	kg/pcs kg/ad
STS BK 80	10	2,1/2"	0,120
STS BK 90	10	3"	0,150
STS BK 100	10	4"	0,170
STS BK 135	10	5"	0,190
STS BK 160	10	6"	0,200
STS BK 215	12	8"	0,250



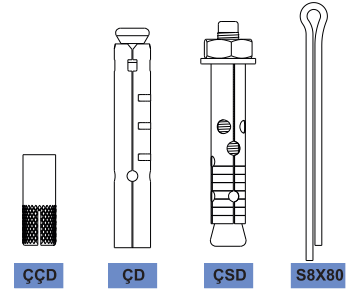
Sıkılabilir Ölçü Tight Dia.	
STS BK 20	16-23
STS BK 25	25-32
STS BK 30	28-38
STS BK 40	40-50
STS BK 50	45-55
STS BK 60	55-65
STS BK 80	76-85
STS BK 90	86-95
STS BK 100	110-122
STS BK 135	136-146
STS BK 160	162-168
STS BK 215	215-222

Kopilya ve Çelik Dübeller / Cotter Pin and Steel Dowels

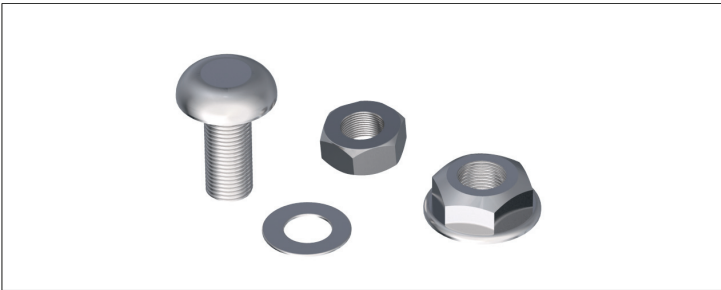


Ürün Kodu Product Code	kg/pcs kg/ad
STS ÇDM6	0,010
STS ÇDM8	0,015
STS ÇDM10	0,025
STS ÇDM12	0,060
STS ÇÇDM6	0,011
STS ÇÇDM8	0,022
STS ÇÇDM10	0,045

Ürün Kodu Product Code	kg/pcs kg/ad
STS ÇÇDM12	0,120
STS ÇSDM6	0,020
STS ÇSDM8	0,040
STS ÇSDM10	0,073
STS ÇSDM12	0,126
STS S8X80	0,035

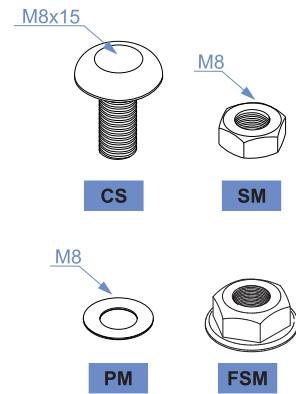


Civata, Pul, Somun / Bolt, Washer, Nut

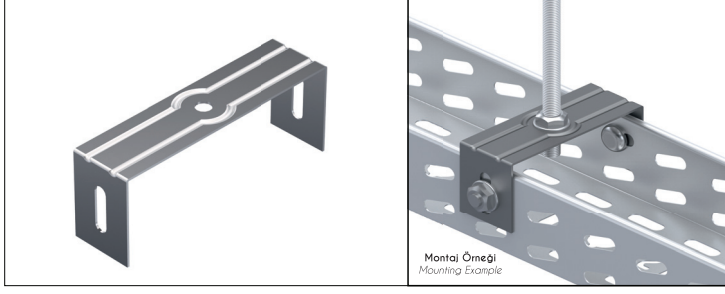


Ürün Kodu Product Code	kg/pcs kg/ad
STS CS	0,012
STS SM8	0,004

Ürün Kodu Product Code	kg/pcs kg/ad
STS C8X15 B.B	0,008
STS M8-P	0,001
STS FSM8	0,0065

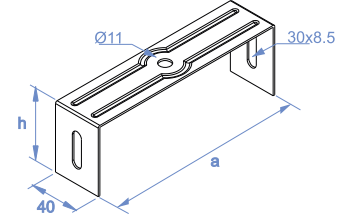


Tijli Kanal Taşıyıcı / Tray Carrier with Rod



Ürün Kodu Product Code	h mm	a mm	1,5mm kg/pcs kg/ad
STS RK 05	57	55	0,070
STS RK 10	57	105	0,090

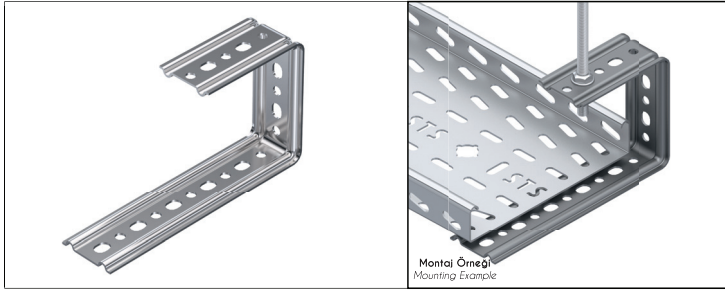
Ürün Kodu Product Code	h mm	a mm	2,0mm kg/pcs kg/ad
STS RK 15	57	155	0,160
STS RK 20	57	205	0,190
STS RK 25	57	255	0,370
STS RK 30	57	305	0,392



Sac Kalınlığı (t) [mm]:
Thickn. (t) [mm]:

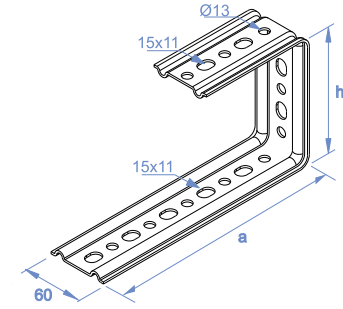


Tijli Kanal Taşıyıcı (Yatay) / Tray Carrier with Rod (Horizontal)



Ürün Kodu Product Code	h mm	a mm	2,0mm kg/pcs kg/ad
STS R 05Y	110	60	0,197
STS R 10Y	110	110	0,251

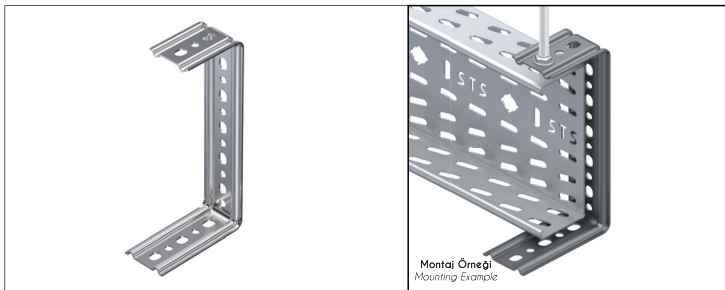
Ürün Kodu Product Code	h mm	a mm	2,0mm kg/pcs kg/ad
STS R 15Y	110	160	0,304
STS R 20Y	110	210	0,385



Sac Kalınlığı (t) [mm]:
Thickn. (t) [mm]:

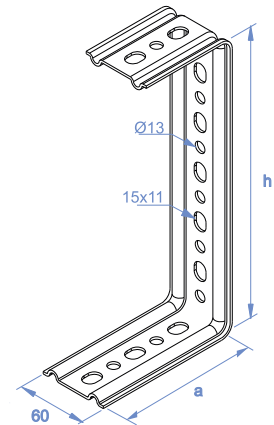


Tijli Kanal Taşıyıcı (Dikey) / Tray Carrier with Rod (Vertical)



Ürün Kodu Product Code	a mm	h mm	2,0mm kg/pcs kg/ad
R05 D	60	60	0,161
R10 D	60	110	0,206

Ürün Kodu Product Code	a mm	h mm	2,0mm kg/pcs kg/ad
R15 D	60	160	0,260
R20 D	60	210	0,296



Sac Kalınlığı (t) [mm]:
Thickn. (t) [mm]:



• Ağırlıklar ± 5% farklılık gösterebilir - Material weights may vary by ± 5%

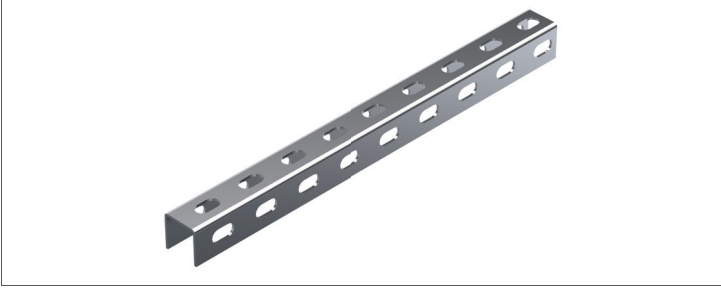
• Ölçüler mm.dir - Dimensions in mm.

Askı & Destek Sistemleri / Hanging & Support Systems

Tijli Askı Sistemleri / Hanging Rod Systems

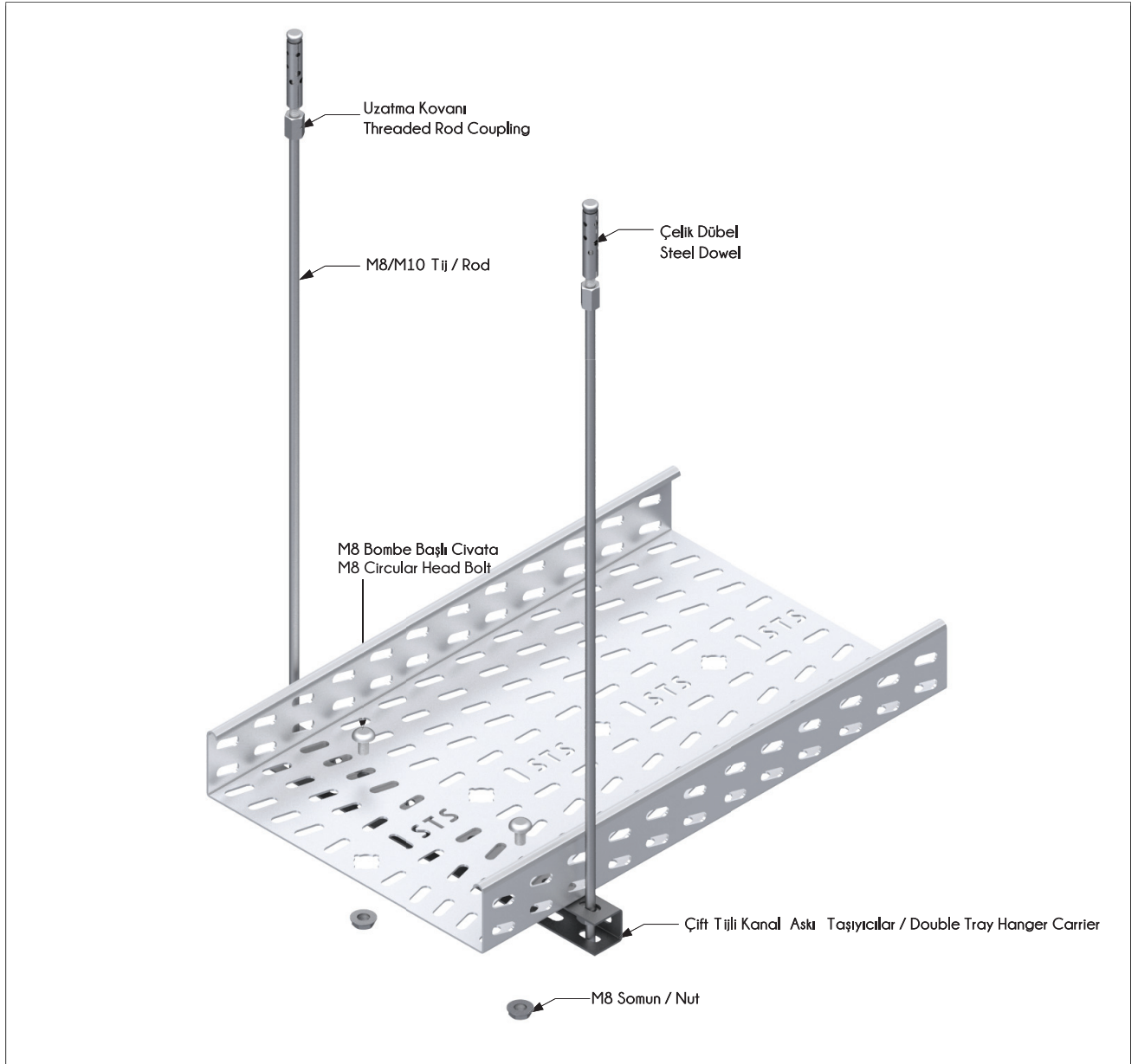
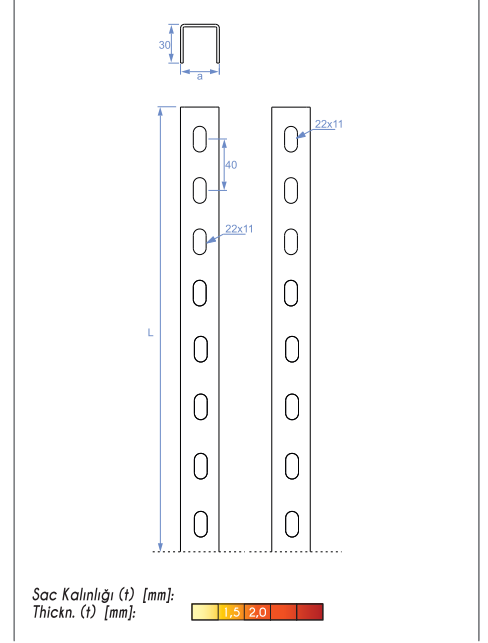


Çift Tijli Kanal Askı Taşıyıcılar / Double Tray Hanger Carrier



Ürün Kodu Product Code	a mm	L mm	1,5mm kg/pcs kg/ad
STS R10 U	30	160	0,125
STS R15 U	30	210	0,164
STS R20 U	30	260	0,203
STS R25 U	30	310	0,242

Ürün Kodu Product Code	a mm	L mm	2,0mm kg/pcs kg/ad
STS R30 U	30	360	0,374
STS R40 U	30	460	0,478
STS R50 U	30	560	0,582
STS R60 U	30	660	0,686



Montaj Örneği
Mounting Example

