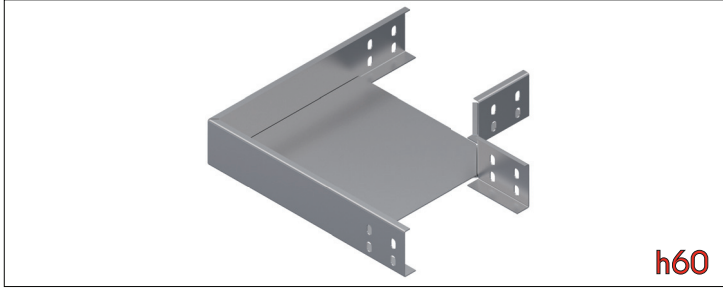


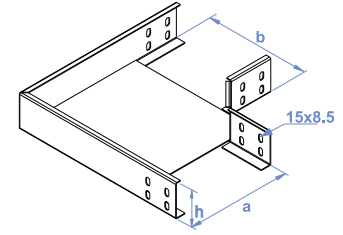
### 90° Dönüş Elemanı / Horizontal Bends 90°



**h60**

Ürün Kodu Product Code	a mm	h mm	1,5 mm kg/ad kg/pcs
STS A 105-615	55	60	0,819
STS A 110-615	105	60	0,953
STS A 115-615	155	60	1,368
STS A 120-615	205	60	1,682
STS A 125-615	255	60	2,189
STS A 130-615	305	60	2,570

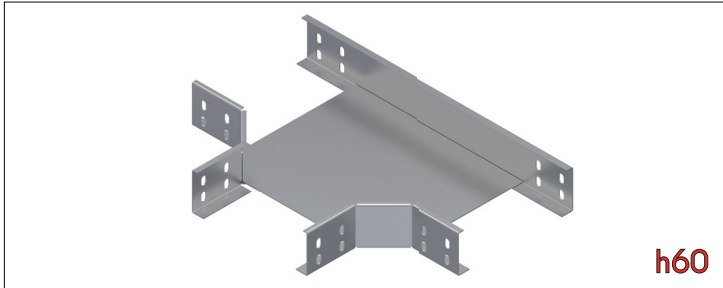
Ürün Kodu Product Code	a mm	h mm	2,0 mm kg/ad kg/pcs
STS A 140-620	405	60	4,909
STS A 150-620	505	60	5,554
STS A 160-620	605	60	7,184



Sac Kalınlığı (t) [mm]:  
Thickn. (t) [mm]:



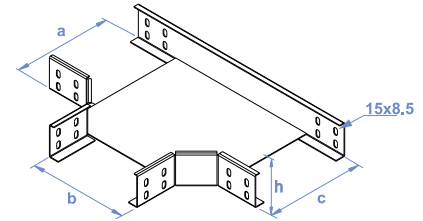
### T Dönüş Elemanı / Horizontal Tees



**h60**

Ürün Kodu Product Code	a mm	h mm	1,5 mm kg/ad kg/pcs
STS A 205-615	55	60	1,087
STS A 210-615	105	60	1,217
STS A 215-615	155	60	1,591
STS A 220-615	205	60	1,863
STS A 225-615	255	60	2,389
STS A 230-615	305	60	3,701

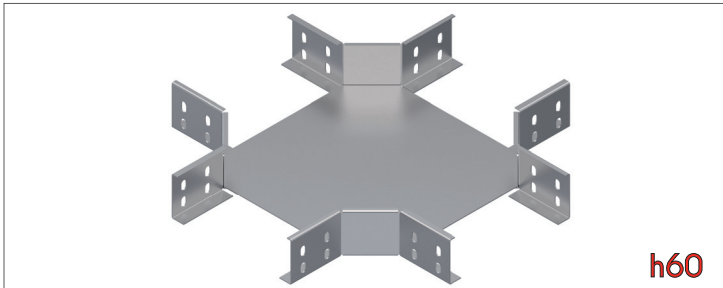
Ürün Kodu Product Code	a mm	h mm	2,0 mm kg/ad kg/pcs
STS A 240-620	405	60	5,017
STS A 250-620	505	60	7,049
STS A 260-620	605	60	9,097



Sac Kalınlığı (t) [mm]:  
Thickn. (t) [mm]:



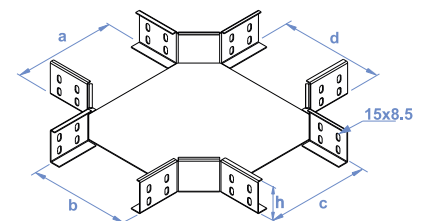
### Dörtlü Bağlantı Elemanları / Quadruple Horizontal Crossings



**h60**

Ürün Kodu Product Code	a mm	h mm	1,5 mm kg/ad kg/pcs
STS A 305-615	55	60	1,054
STS A 310-615	105	60	1,179
STS A 315-615	155	60	1,491
STS A 320-615	205	60	1,743
STS A 325-615	255	60	2,189
STS A 330-615	305	60	2,530

Ürün Kodu Product Code	a mm	h mm	2,0 mm kg/ad kg/pcs
STS A 340-620	405	60	4,722
STS A 350-620	505	60	6,369
STS A 360-620	605	60	8,314



Sac Kalınlığı (t) [mm]:  
Thickn. (t) [mm]:



• Ölçüler mm.dir - Dimensions in mm.